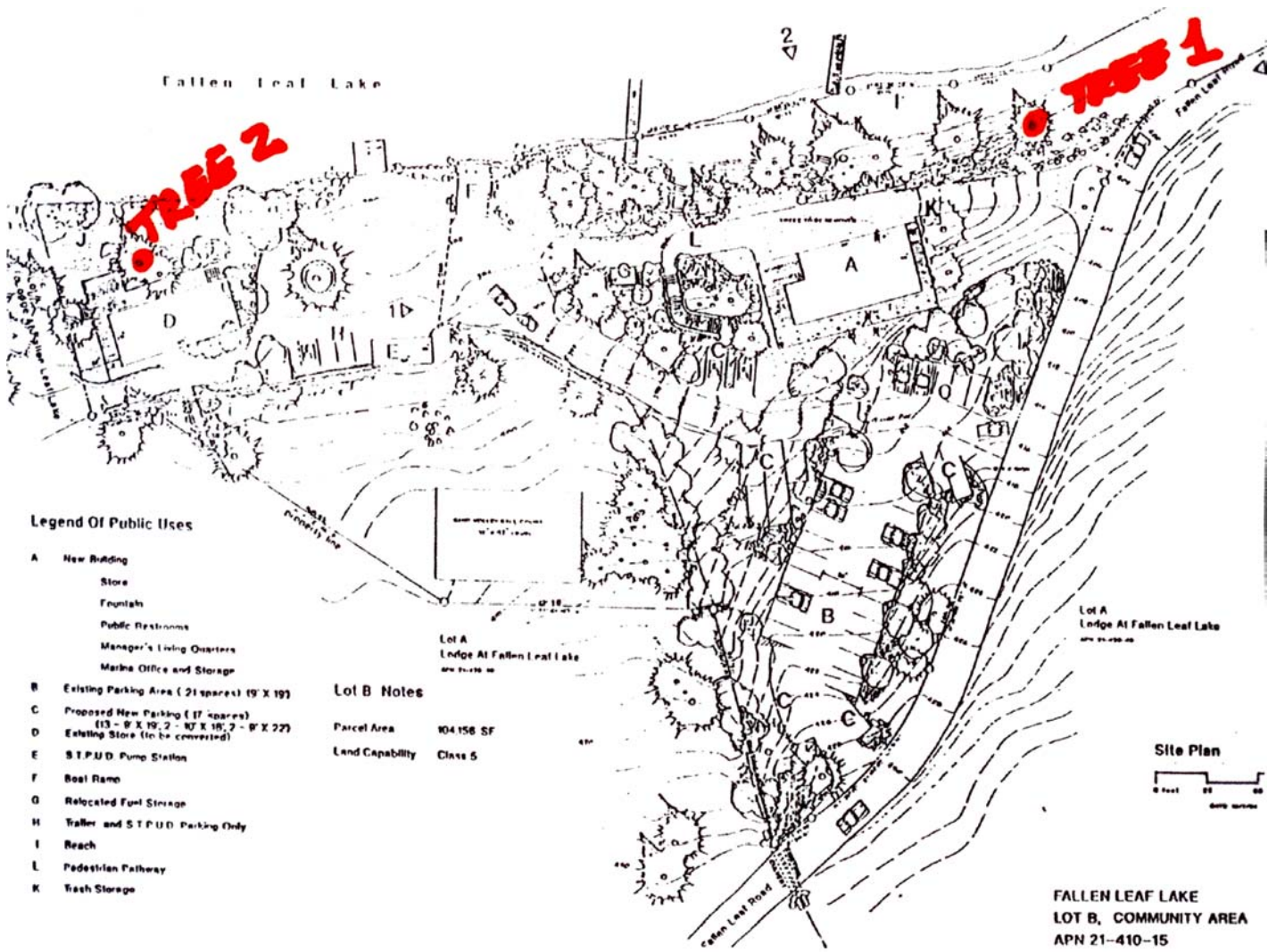




Tree #1 The New Store is in the foreground. Angora Ridge is in the background. Per the “map”, this is Tree #1



Tree #2 The Old Store is in the foreground. So, this is Tree #2 per the “map” on page 3.



Fallen Leaf Lake

TREE 2

TREE 1

Legend Of Public Uses

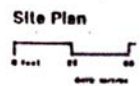
- A New Building
 - Store
 - Fountain
 - Public Restrooms
 - Manager's Living Quarters
 - Marina Office and Storage
- B Existing Parking Area (21 spaces) 19' X 103'
- C Proposed New Parking (If approved)
 - (13 - 9' X 19', 2 - 10' X 18', 2 - 9' X 22')
- D Existing Store (to be converted)
- E S.T.P.U.D. Pump Station
- F Boat Ramp
- G Relocated Fuel Storage
- H Trailer and S.T.P.U.D. Parking Only
- I Reach
- L Pedestrian Pathway
- K Trash Storage

Lot B Notes

Parcel Area 104,156 SF
 Land Capability Class 5

Lot A
 Lodge At Fallen Leaf Lake
 APN 21-410-15

Lot A
 Lodge At Fallen Leaf Lake
 APN 21-410-15



**FALLEN LEAF LAKE
 LOT B, COMMUNITY AREA
 APN 21-410-15**